

The “Box”

by Frank Sumption

The purpose of the “box” as it is now referred to, is simply to provide a source of audio bits made up of fragments of human speech, music and noise. This noise is known as “raw” audio, it is the raw material out of which spirits of the deceased, and other entities use to create their own voices out of. “Presumably” by remodulated and remixing the raw audio to make the various noise fragments from words and voices of their choosing. In the box, the raw audio is created by sweeping the tuning of a radio electronically across it’s band, or tuning range, the resulting bits of speech music and noise are the raw audio. Radio is simply a convenient source of raw audio. However, that’s only a guess as to how the box works, there does seem to be an RF component, or at times an actual signal received, or some other method of getting an external voice into the radio in the “the box”. Some of the manipulation of the raw audio seems to take place inside the electronics, again, presumably “they” can manipulate the electrical signals. I don’t have the equipment, or know how to be able to test these ideas.

The concept of the box is that simple, it can be stated in a single paragraph, as above. There is also nothing special, or magical about the box, it is in fact just one method of supplying the raw audio. The raw audio can be white noise, the sound of running water, crowd noise-as in a crowd of people talking, noise from a fan, or the noise from a radio tuned between stations. Raudive believed the frequency of 1,485 Khz was useful to the entities. I like to use this radio method when there is skip, or distant radio stations fading in and out almost randomly.

Sweep modes; When I first made the box I fashioned it after EVPmaker, a computer program that takes speech audio in the form of a wave file, breaks it up in chunks, then plays these chunks, or raw audio, back randomly while recording the result. The term “raw audio” is from EVPmaker. Entities manipulate the raw audio inside the computer to form meaningful phrases and messages—inside the computer! When I first got the idea for the box I assumed the sweep had to be random, like EVPmaker. In 2006, with the help of members of the yahoo group EVP-ITC, we found that the sweep could be done by hand, simply turning the radio dial by hand while recording directly from the speaker. Then we found the box sweep could be linear. To me, the ghost voices seemed more consistent, and longer when linear mode was used. Curiously, now that I have linear mode I have a great deal of trouble getting the random sweep mode to function at all.

Types of radios

Back in the mid 1990s I was using radio tuner modules removed from older digital car stereos to make sensitive voltage tunable radios to receive distant AM stations, known as AM DX. As I used EVPmaker I kept getting messages that seemed to be relayed from spirits that seemingly could not use the computer, so in 2002 I was wondering what else I could use. After a week or two I was driving the company truck and the idea for the first box popped into my head, fully formed, I could actually see #1 in my head. Fortunately, these “visions” are just very brief times where normal reality seems to disappear. I’ve had a few of these “visions” throughout my life. I think in this case it was my own mind assembling previously known information to create the idea for the box, as I had used these tuners in the past.

I am no engineer, and I was unaware of other sources of tuners and radios, other than car stereos that could be voltage tuned until the man that invented the Paranormal Puck, and the Ovilus, a digital method spirits can use to form voices, discovered that a simple box could be produced by “hacking” some of Radio Shack’s AM/FM radios. By clipping one pin, the radio would sweep up the band without stopping when the tuning button was pushed and held for a couple seconds, then start over when it reached the upper band limit. This was actually the discovery of linear sweep. I used these same Radio Shack radios without their processor board, and supplied my own sweep voltage from an op amp based function generator. The voltage from the sweep generator is in the form of a triangle wave, so it sweeps the radio’s tuning smoothly up the band, then back down the band.

Recently, Radio Shack discontinued the radios that were originally being “hacked”, fortunately for ghost research there are newer models that are hackable. I didn’t want to be tied to commercial whims of radio availability so I began trying to come up with my own design. At first I tried using standard heterodyne, or down conversion radios, which is the norm for radio design now. I found in every case that the radios were very noisy in between stations. While some of this noise is acceptable, and may even be used by some entities to form voices, mostly it interferes with intelligibility of the voices. I found that in this case, simpler may be better, as in a simpler radio design.

When radios were first produced back in the 1920s they simply amplified the Radio Frequency Signal using circuits that were adjusted by hand to resonate at the desired frequency. Only one frequency is at resonance for any given setting of the controls, others are attenuated. Several of these resonate stages were used to get enough gain of the signal, then the audio was separated from RF by a detection circuit, usually a simple diode. The audio is then amplified to drive a speaker.

There is a modern version of the TRF, Tuned Radio Frequency receiver in chip form, the MK484. This chip has been replaced recently by the TA7642. Only one tuned circuit is required, and it can easily be made voltage tunable by using varactor diodes. The result in a box there is much less noise between stations, and –my own opinion---more intelligible voices. There is one drawback, the broadcast fragments, chunks of audio that are actually whole words and phrases from broadcasts, are more frequent, and longer. Now, there may be synchronistic reception of frags,

that is there may a personal meaning to what is received, or the frags (fragments) may be combined with words created by the entities. As with anything from the boxes, or any method, you have to judge it by personal meaning, or content. I don't take anything from any form of EVP as gospel truth. I use the box as a form of spiritual guidance. I have five of these TRF boxes made so far, and I hoping they can be tried by other researchers at the Queen Mary during the Darkness Radio Event, Psience.

I think many are looking for certain kinds of voices from the box that would be consistent with older methods of EVP recording, in doing so they miss most of what comes through, and break out all skeptical/critical of the box and box users. I have heard form various researchers that will not accept that entities can re-arrange broadcast voice fragments to form meaningful messages. First, they assume spirit is somehow a human that is reduced in function and mind power, that spirit is something of a retarded half human entity no longer capable of intelligent action, that concept is Hollywood, and not even close to the fact that is us, the so called living that is diminished, and unable to perceive anything of the real universe out there. The spirits/entities are higher dimensional beings, as such they have full access to this level, a lower dimension, and can easily manipulate electrical signals.

Box beginnings

The genesis of the box was not as profound as many seem to like to think. I'm not so much a paranormal researcher or investigator, mostly I'm just curious and intrigued. I used to buy the magazine Popular Electronics fro articles and electronic construction projects. In 1995 there was an article on EVP in Popular Electronics, the first I had heard of the phenomenon. I tried the experiments with white noise, but got nothing back in 1995. Being busy with ham radio and other projects, I decided to set the magazine aside and try again some other time. I cam across the magazine again in 2000, and decided to try again, this time there was a voice. I don't remember what was said, and I didn't save the recordings, but it was a man, and he seemed to know me, or it had that feeling to the contacts. I got a number of other voices, even animals, but listening to the recordings with the volume turned all the way up made my ears rings, so I started searching the web for other methods. I quickly found EVPmaker, a freeware program that runs on the computer. I tired this and one of the first voices I got on a computer that was just the bare board, drives and power supply, no case was "that's some special computer board, Frank and Norma". I was stunned, and completely hooked by then. After more than a year of using EVPmaker I noticed I would get messages that seemed to be relayed form spirits that could not use the computer. It's now been too long fro me to remember exactly what the messages, and suffice to say my record keeping skills leave a great deal to be desired. I began to wonder what else I could use so all entities could speak, this was in the summer of 2002. After maybe a week or two, again I don't remember how long, but all the sudden, while driving one day I got like a vision of the first box, and knew how it was supposed to work. I had used receiver modules removed form car stereos back in the 90s for AM DX, or listening to distant AM stations. The box or EVP receiver idea was to take one of these voltage tunable receiver modules and sweep it's tuning with a random voltage. It was only because EVPmaker used a random function in generating the raw audio that I had assumed the sweep had to be random in the boxes. Later experiments, and the "discovery" of the hackable radios led to the

development of linear and manual sweep modes, which seems to work better than random mode in that the messages are longer and more coherent, easier to understand. Since I started using linear sweep, I find the random circuit difficult to even make work, and run consistently, but I do include it in an occasional box.

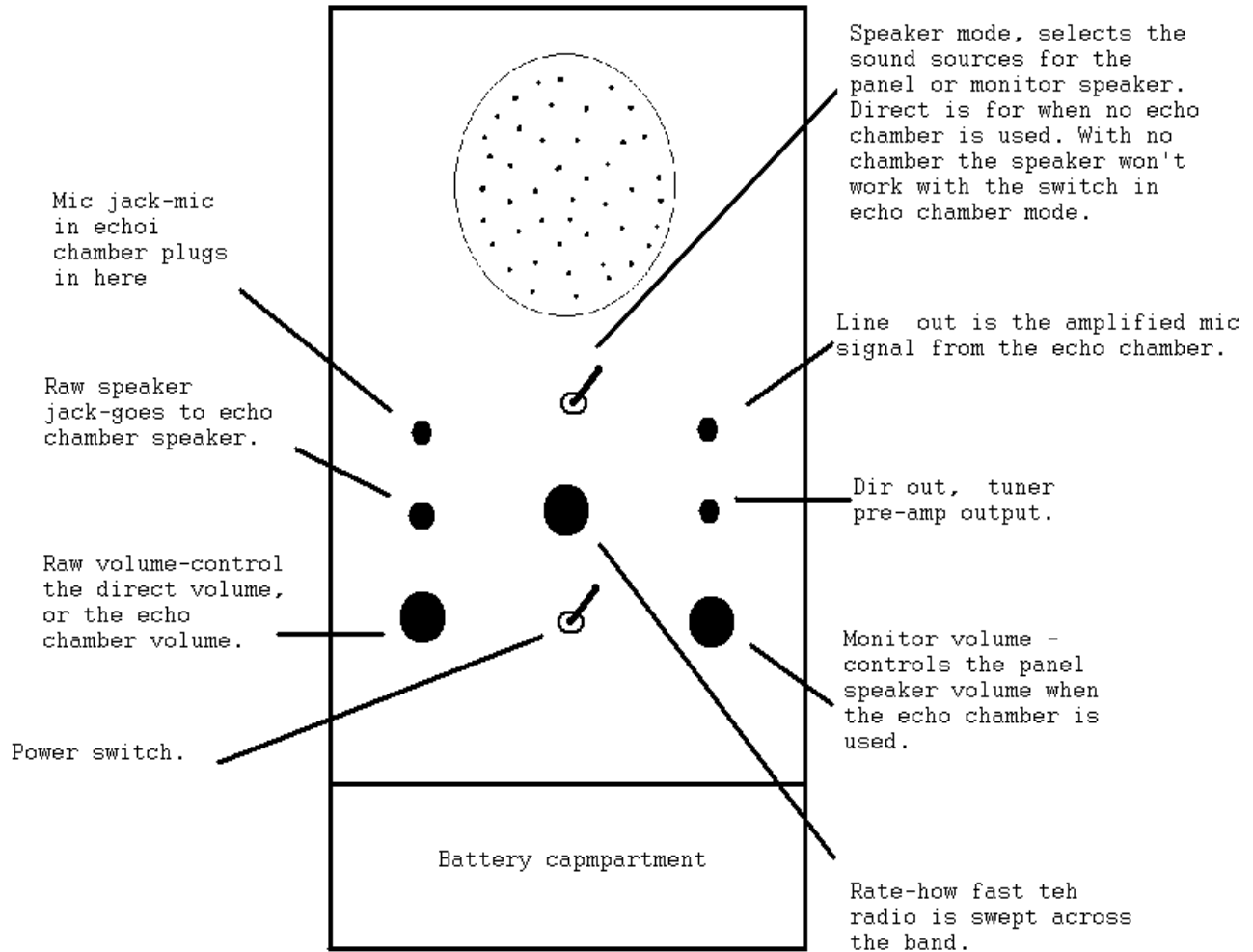
I do this work pretty much out of curiosity about the voices, and the fact that something speaks via radio that ordinarily should not be there and is clearly not broadcast fragments, or any other “normal” radio transmission keeps me intrigued. It’s not so much “for the benefit of mankind”, and I have no delusions of fame or fortune.

A word of caution

All of the boxes so far are experimental devices, and not designed, built, or intended to be carried around dark basements, or soggy graveyards chasing ghosts. The boxes were intended to be used in a fixed location for the purpose of ITC communications. The circuit boards and cabinets may not stand up to being carried on ghost hunts. You also have to keep an eye on the 12 volt AA battery packs, some have melted due to battery malfunctions.

Contrary to popular belief, spirits, and entities travel, you have only to ask, or maybe even just think of the person you want to contact, there is no need to go the “haunted locations”. Besides, just what kind of being do you think you’re going to contact in a dark moldy basement? I prefer entities that come out and play in the light.

Panel, or monitor speaker



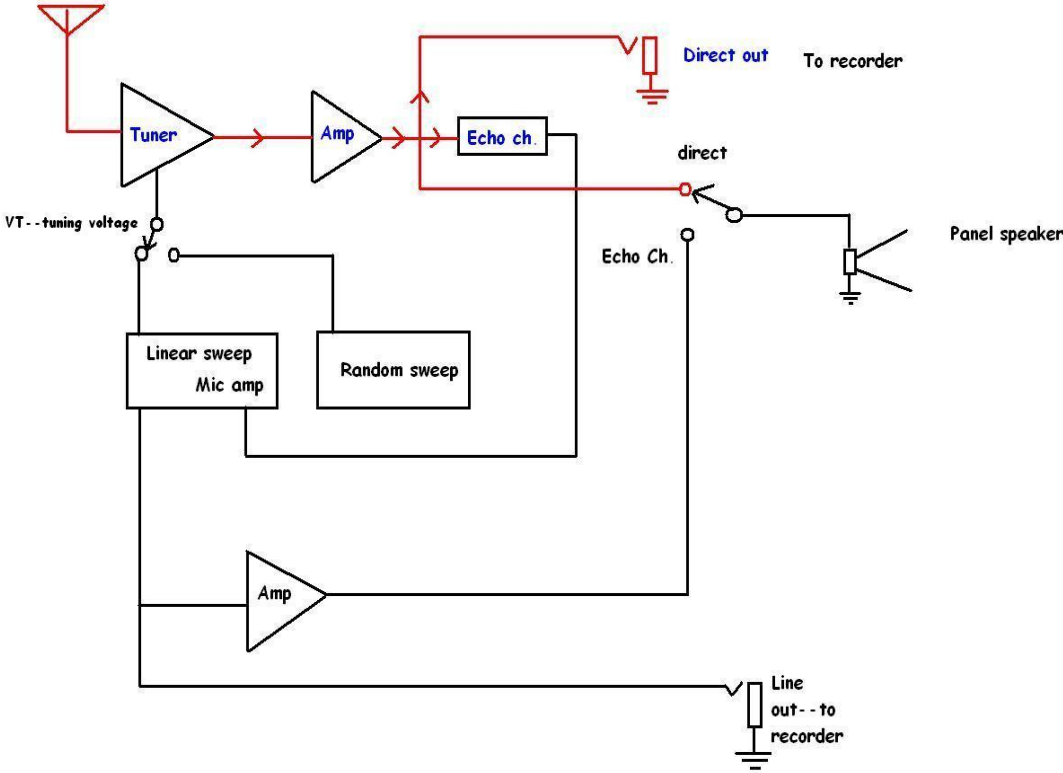
Controls and jacks for a typical box, regardless of tuner type used. The positions may vary from box to box, but the funtions are the same.

For use without the echo chamber, set the speaker mode switch to Direct, turn the box on and adjust volume with the Raw volume control.

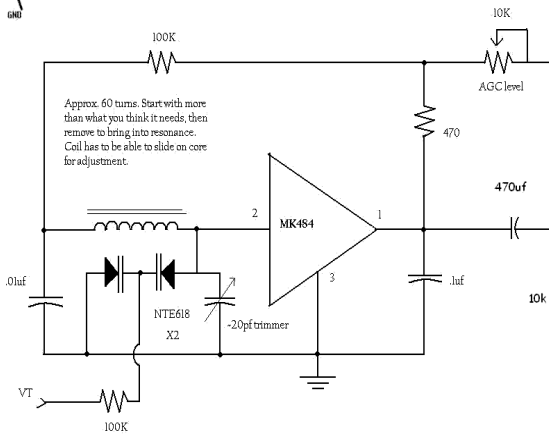
Most “researchers” seem to just record directly from the speaker, that way questions may be asked and recorded. Output jacks are provided that can connect direct to a recorder. Most digital recorders have only a mic input, an attenuator maybe required to use the line level outputs from the box.

The echo chamber isn’t really to add echo, it acts like an audio filter, and also seems to allow different entities access, for some reason. When I first started using the echo chamber I got the “we come from the sixth planet” voice. Normal spirit communications seem to not require the chamber, all of the sound manipulation seems to take place inside the electronics of the radio, or amplifiers.

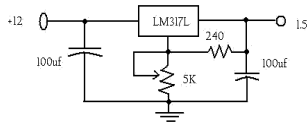
Basic Box Block diagram



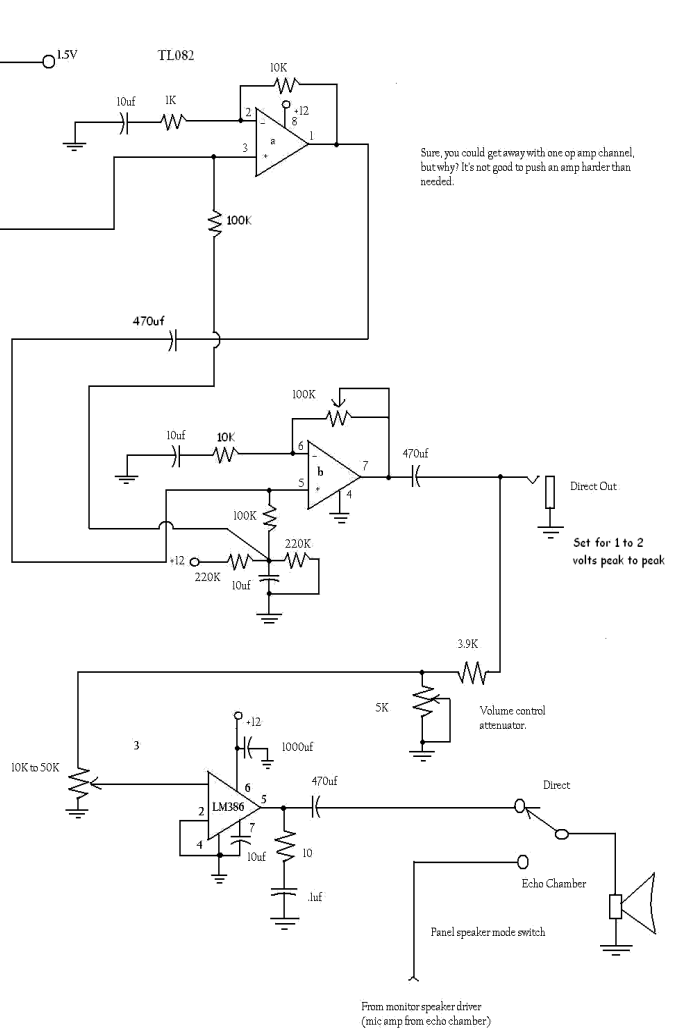
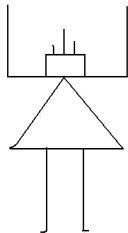
Basic TRF AM radio used in TRF Boxes



Approx. 60 turns. Start with more than what you think it needs, then remove to bring into resonance. Coil has to be able to slide on core for adjustment.



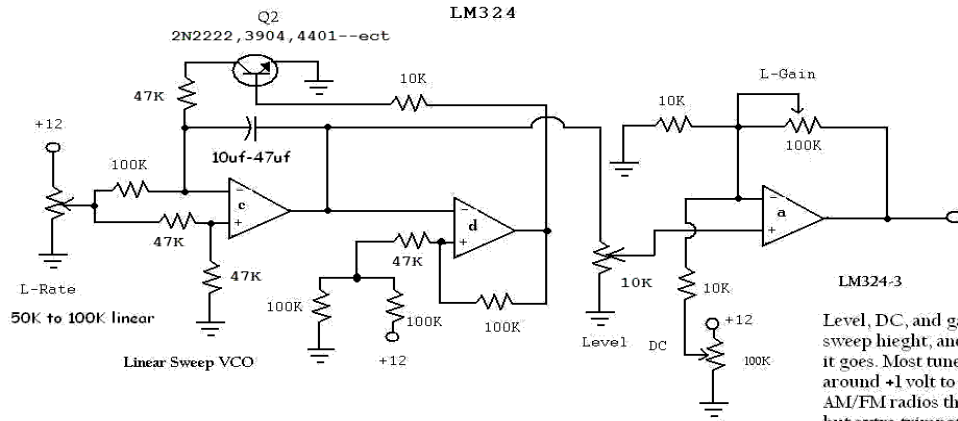
A simpler radio design for Frank's box
May 28, 2009



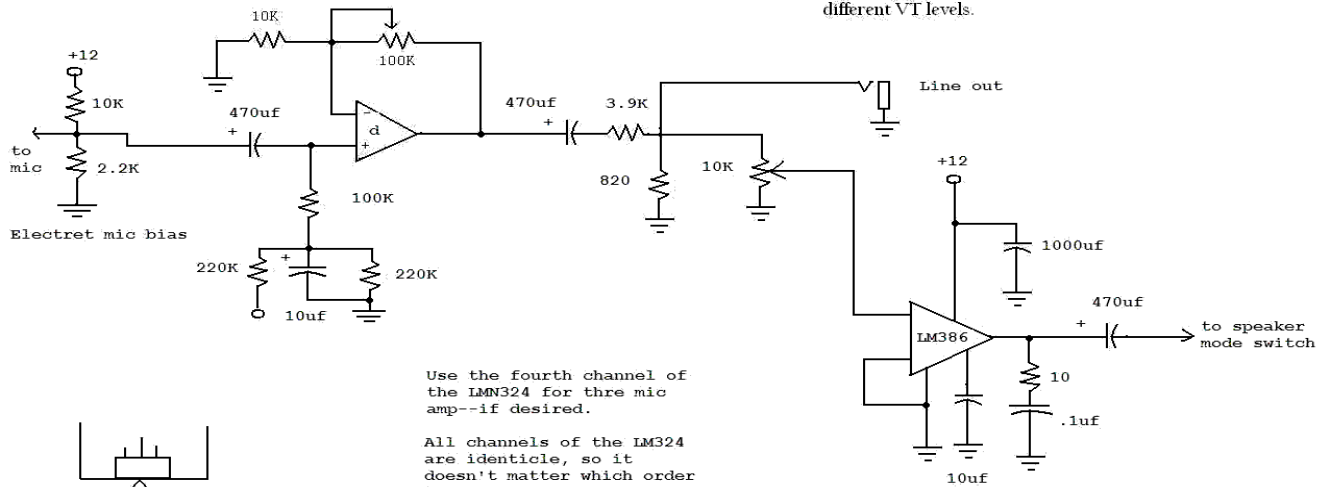
Sure, you could get away with one op amp channel, but why? It's not good to push an amp harder than needed.

From monitor speaker driver
(mic amp from echo chamber)

Linear sweep used in TRF boxes

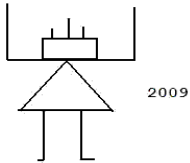


Level, DC, and gain all interact to set the sweep height, and how close to zero volts it goes. Most tuners need VT to go from around +1 volt to 7.5 to 8 volts. Often in AM/FM radios the ranges are different, but extra trim pots can be added and switched in with the band switch to get the different VT levels.

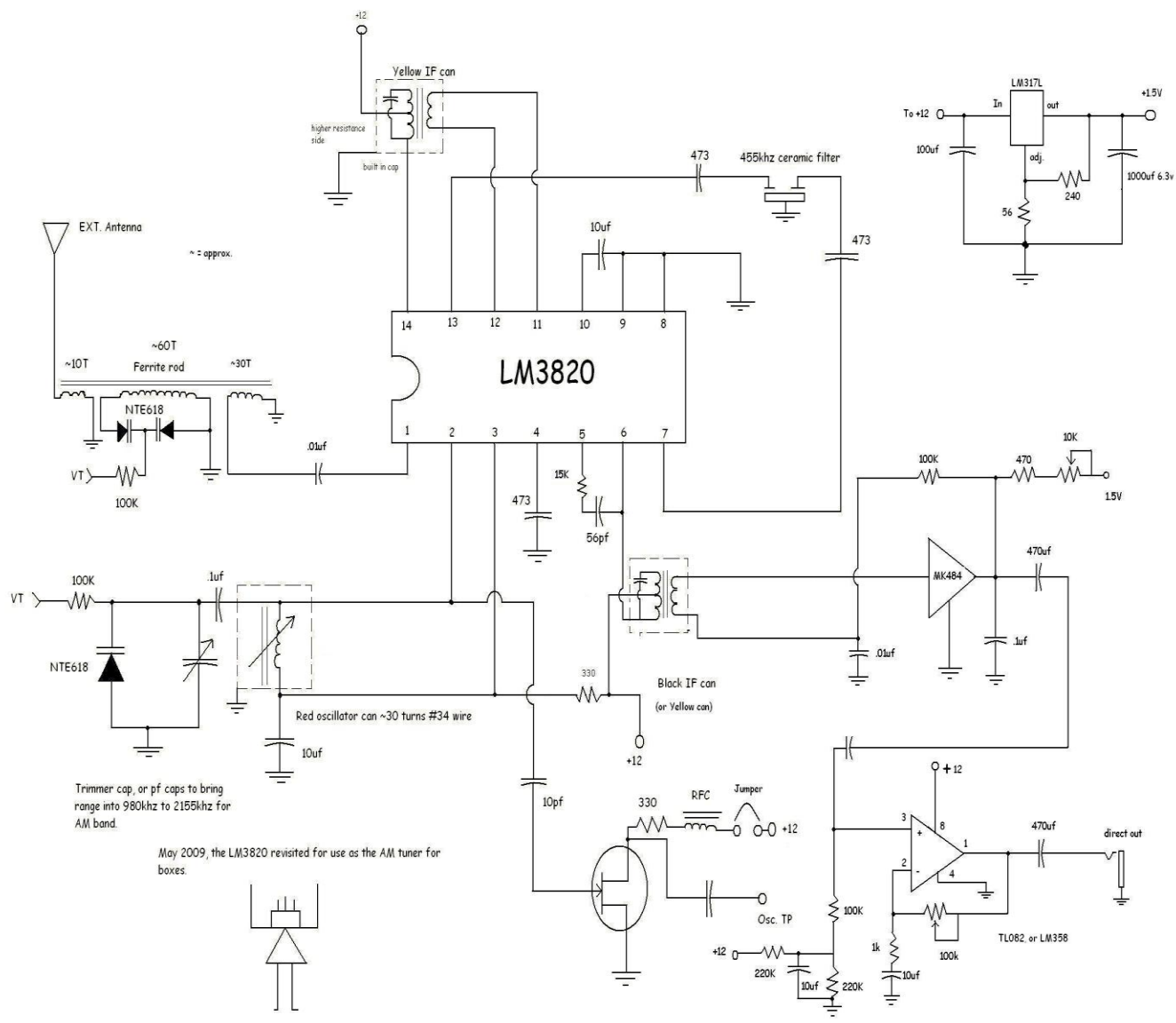


Use the fourth channel of the LM324 for three mic amp--if desired.

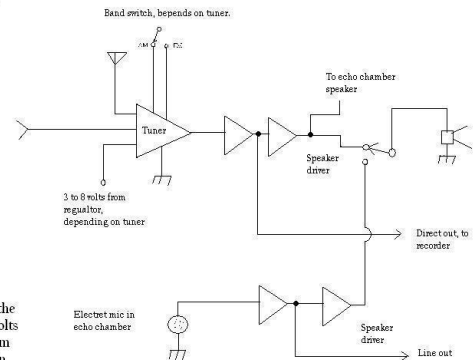
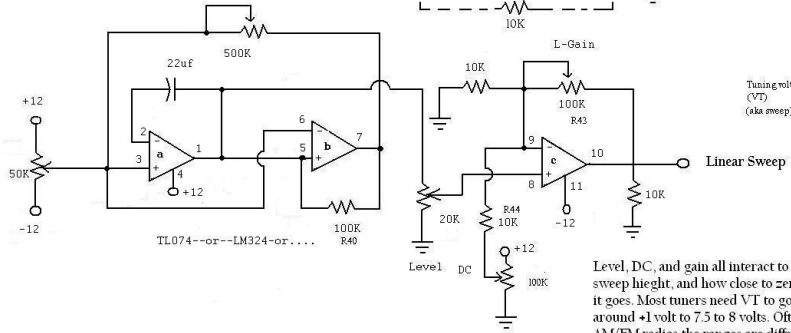
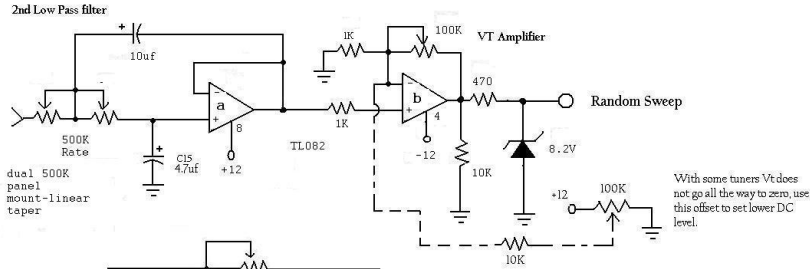
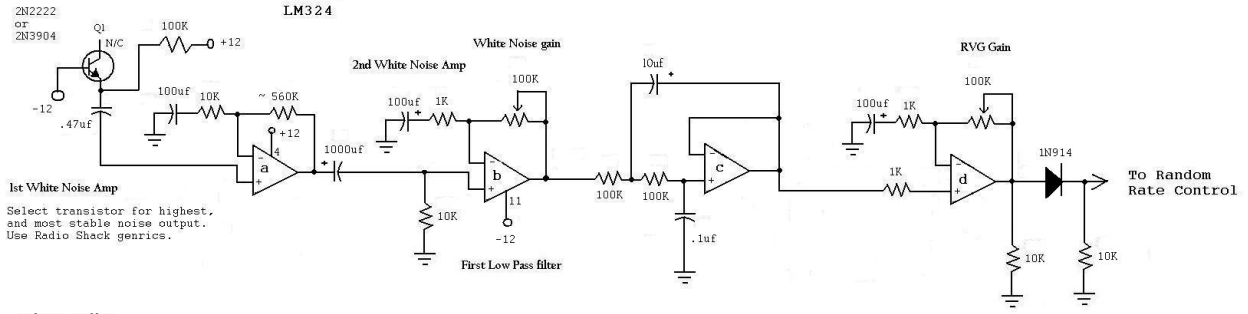
All channels of the LM324 are identical, so it doesn't matter which order they are used.



Box 52-LM3820 with MK484 IF Amp



Sweep used in Number 52



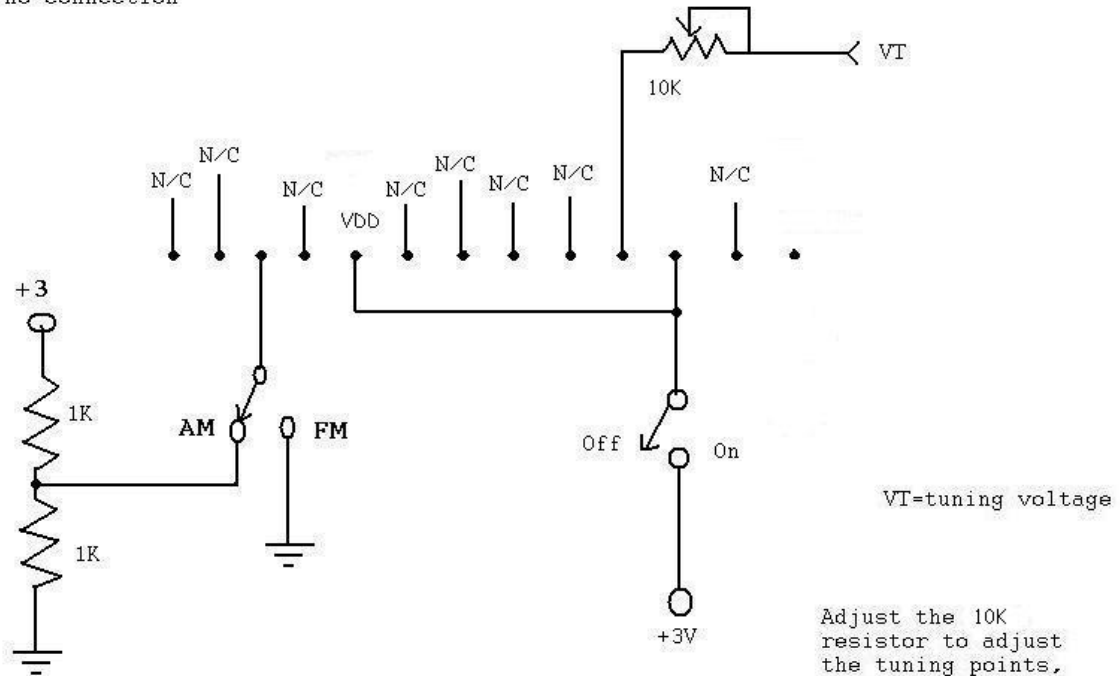
Dual supply sweep for sweeping the tuning of voltage tunable radios from using Frank's Boxes, or realted systems. May 23, 2009



2008

Diagram for using the Radio Shack 12-469 headless-or without the processor board

N/C=no connection

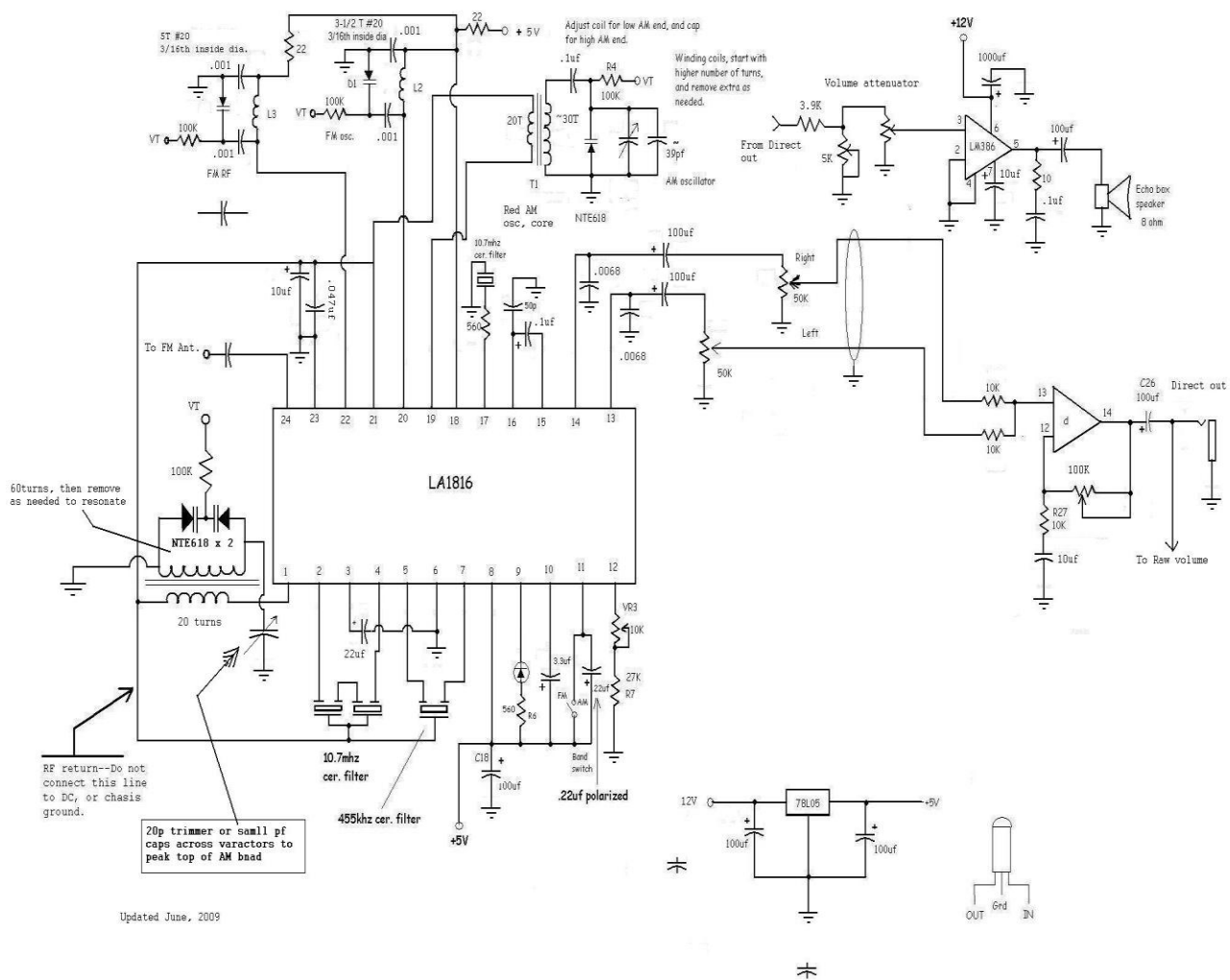


VT=tuning voltage

Adjust the 10K resistor to adjust the tuning points, or what VT level the bottom of the band is. You may have to use two different values, one for AM, and one for FM, switched with the band switch.

12-469 Re-hacked.

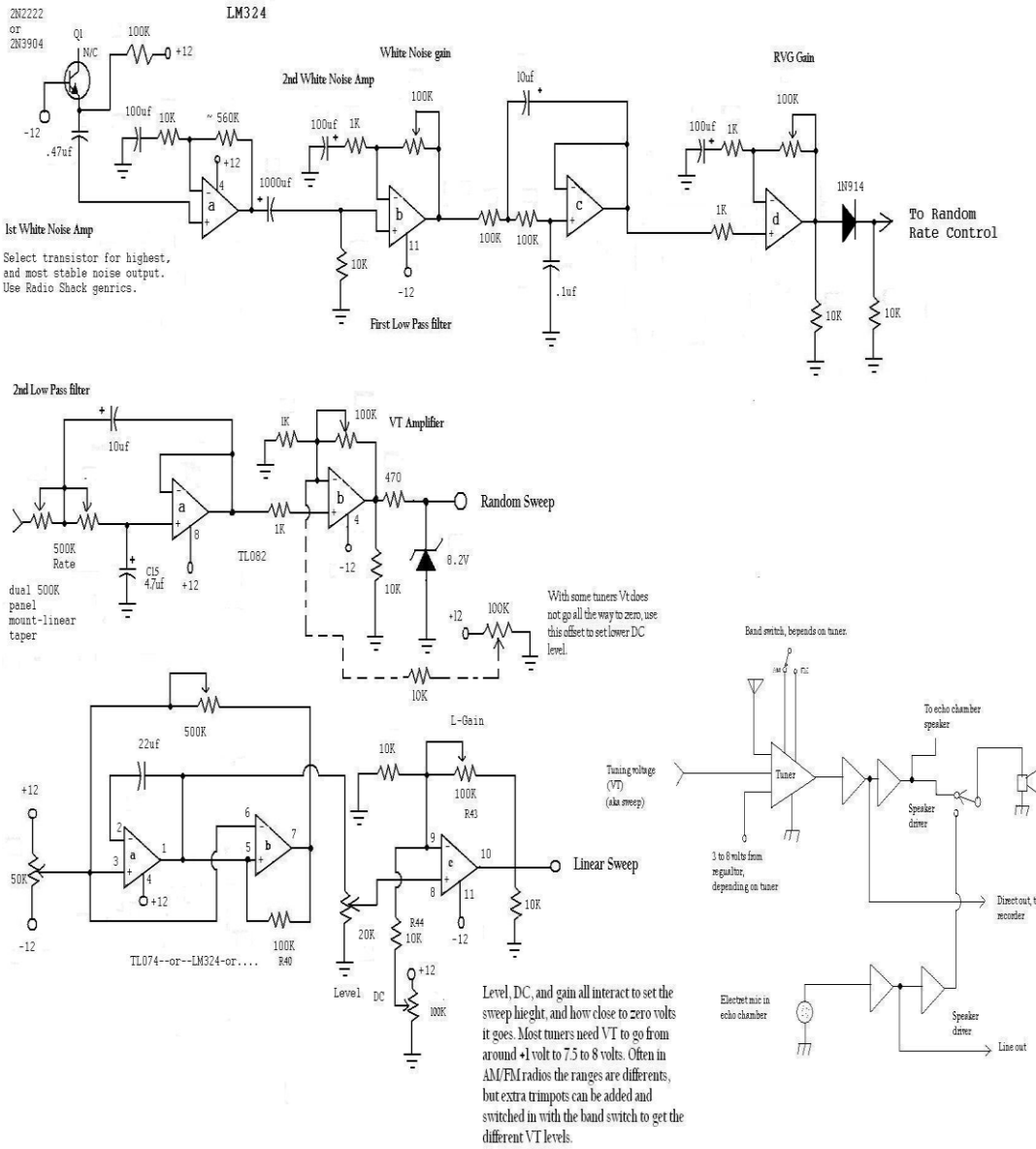
Box 53 schematic the LA1816 AM/FM chip



This radio is still pretty noisy on AM, and the varactors for FM are not determined, but should be around 15 to 20pf.

The sweep circuits, and most audio amplifiers for any given box are the same, so I don't usually include those in the schematics.

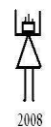
Dual supply (+12 volt and -12 volt) sweep circuit.



Select transistor for highest, and most stable noise output. Use Radio Shack generics.

With some tuners VT does not go all the way to zero, use this offset to set lower DC level.

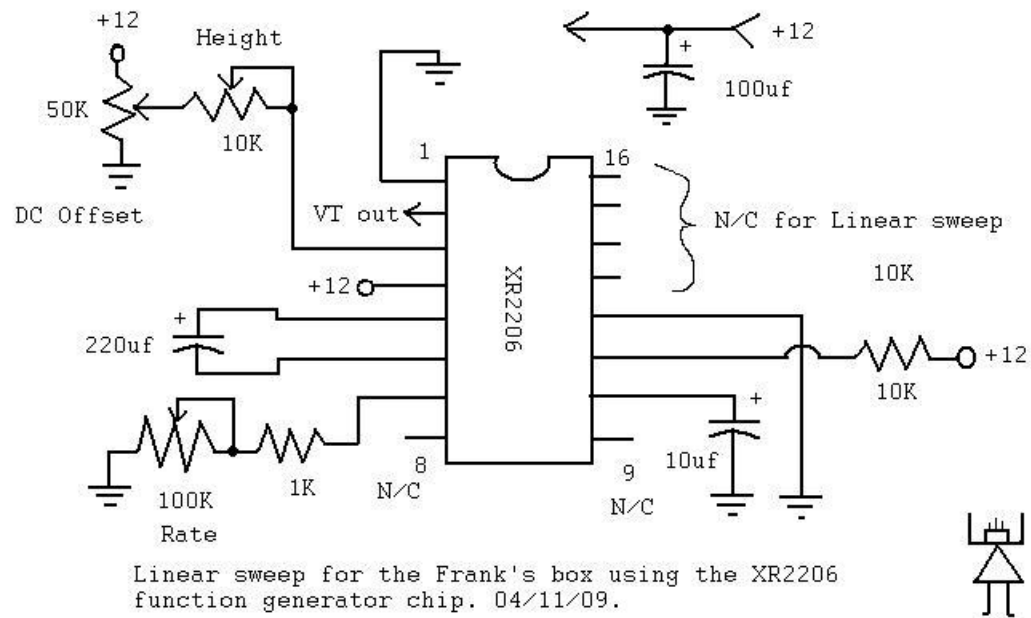
Dual supply sweep for sweeping the tuning of voltage tunable radios from using Frank's Bones, or realted systems. May 23, 2009



2008

I stopped using the dual supply version to save on batteries. the Random mode is more stable with the dual supplies.

Experimental sweep using the XR2206 function generator chip. Used in Box 51



Box 51 is AC powered, or plugs into the wall for power, there are no batteries.

Basic echo chamber

